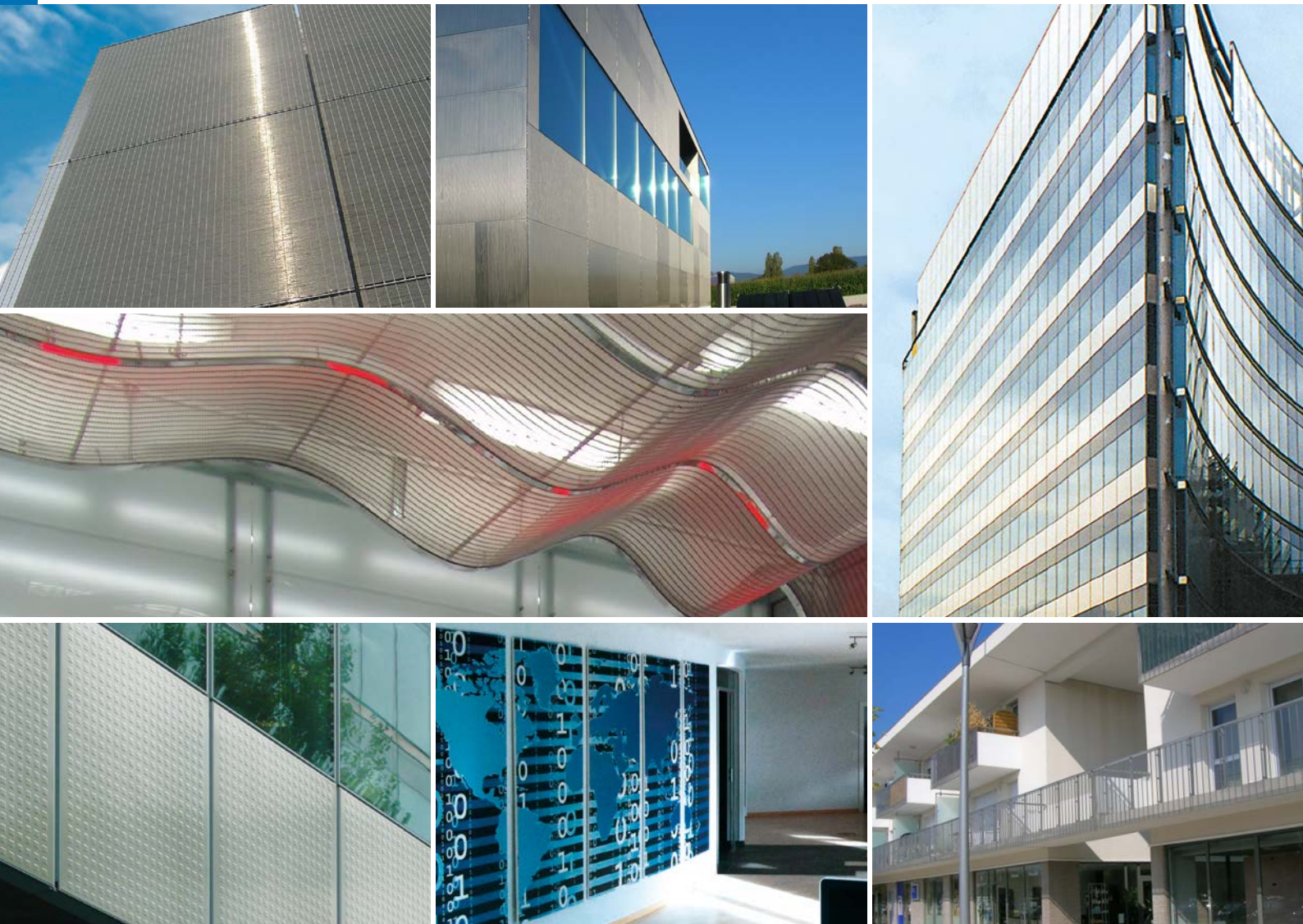


# Facing new possibilities

High-tech materials for facades and surfaces





# Visionary materials

## For visionary architects

Who says that industrial products cannot be beautiful? ANDRITZ engineers and manufactures products for various industries. Some of these products include wire mesh fabrics and precisely perforated plates that are used for forming and filtering in industry. Seen in a different light, these products are not only functionally superb, but aesthetically pleasing as well. This gave rise to the vision of refining these products so they would appeal to architects and constructors searching for façades and building surfaces that are long-lasting, strong, and have an undeniably stylish, contemporary look.

### A bit more aesthetic

The impetus for our work came from the desire to design structural and surface elements that are high-performing technically, and visually unique. Elements which inspire a sensation of spaciousness. What began initially as small-scale interior thinking, expanded to a program to take on large surfaces and dress buildings in beauty. The results are highly appealing to both architects and builders alike – structural elements and surfaces which are unparalleled in terms of durability, flexibility, ease of installation, and value perception.

### Turning things inside out

No longer are these surfaces hidden inside machines and industrial complexes. ANDRITZ offers a portfolio of architectural fabrics – from the ARTOS metal mesh series to metal facade elements that are perforated, embossed, and punched – that display a new external appearance and offer great functionality.



#### ARTOS architectural metal mesh

Uncompromising stability and elegance in a steel mesh material. Impressively flexible and unrivalled when it comes to translucency.



#### Eurosot Series – Solutions made of wedge wire

The charm and light touch of filigree meets stability – both practical and visually appealing.



#### Velaro facade elements

Fine surfaces that catch the eye and invite investigation. Velaro series has a whole range of perforated and embossed design patterns.



#### SonoPerf sound insulation

Microslots provide the technical basis for first-class sound absorption.



Benefits

- High translucency
- Flexible in one direction
- Customizable mesh sizes
- Structurally stable
- Resistant to corrosion and harsh weather

Bangkok Suvarnabhumi Airport, Thailand ▶



# ARTOS architectural metal mesh

## Unsurpassed elegance with great variety

Architects and designers alike value the properties of ARTOS metal mesh. Very few materials can accommodate the apparent contradiction of openness and closure at the same time. Metal mesh masterfully interweaves form, function, and versatility in both indoor and outdoor settings. With its unique quality and appearance, ARTOS mesh in different lengths can be adapted to any structure.

A mere facade? Far from it. ARTOS offers a wide range of appearances for diverse applications. Refined and dressed in steel, ARTOS exceeds expectations with a keen sense of current trends.

Impressive ARTOS constructions can be suspended from the ceiling. ARTOS handles any task with expertise: indoors and outdoors, in detail, and on a large scale.

When it comes down to the bare facts, ARTOS delivers every step of the way, in terms of design and its range of applications, from flooring to partitions to sunshades.

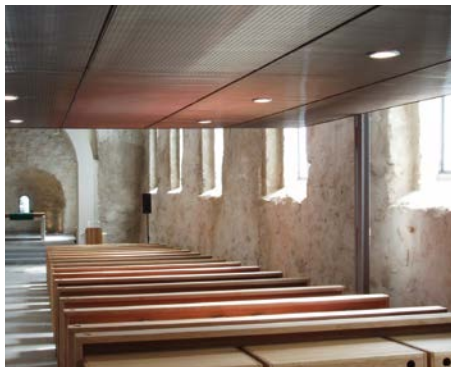


Princesshay, Exeter, UK – multi-story car park ▲  
The double layer creates a moiré pattern

Berlin, Germany - Berlin Wall viewing platform ►



▲ Deceptively solid – the impression that contemporary architecture conveys



▲ Creating graceful and spacious areas: ARTOS lays it open with an unobstructed views upwards



▲ Easily installed: a look at and behind the facade shows its flexible installation





# In no uncertain terms

## ARTOS stands for durability and functionality

Stainless steel is a material that epitomizes durability and elegance with a highly attractive finish. Virtually anything is possible with this material. The ARTOS team, drawing on experience and technical knowledge, is ready to help you see your project through to completion – from Bochum to Bangkok, from a trade fair to an airport.

### Firmly fixed

Every project starts with a plan. And every plan starts with knowing what is technically possible. We help you achieve your specific goals for installation of our products with tried and tested ARTOS mounting principles for upper and/or intermediate fixing points. To ensure flexibility in installation, we offer lower fixing points with tension-spring or compression-spring brackets, frame constructions, angle profiles, and rod strainers. Stainless steel hooks, easy to disassemble, secure the steel mesh to the ceiling and floor.

### Sparkling clean

The quality finish of ARTOS metal mesh ensures that it can resist the whims of weather. The mesh is corrosion-resistant and easy to clean. Environmental factors such as extreme humidity, chlorinated water, salt air, deicing sprays, or aggressive pollution are taken into consideration by our ARTOS team early in the planning stage. ARTOS specialists can offer examples and ask questions to help you look beyond the obvious conditions to cover all eventualities – including factors that may initially seem irrelevant, but could prove crucial from a wider perspective.

### Benefits

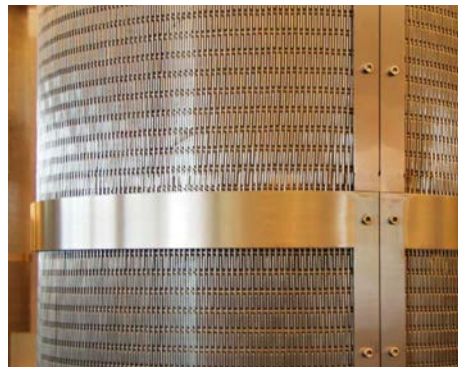
- Universal stainless steel mesh for architects and designers
- Transparency, elegance, simplicity, and structure
- Precious metal wire mesh available for visually striking designs
- Depending on the viewing perspective, ARTOS mesh either covers or reveals
- Depending on lighting, ARTOS mesh either casts shadows or appears transparent
- When moving, the viewer is presented with an ever-changing impression of the architectural form



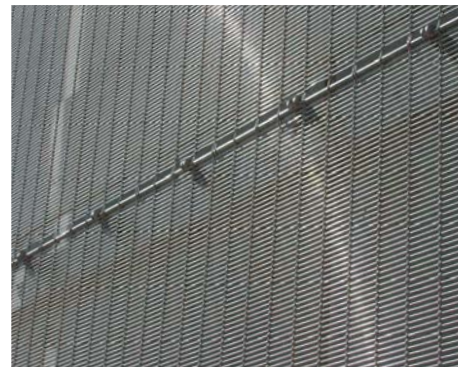
▲ Uptown Munich, Germany



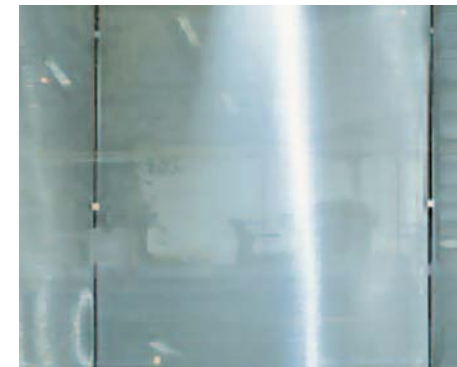
▲ ARTOS beta: handsome stainless steel backdrop achieves a center-stage appearance



▲ Artos lambda: solid impression, delicately reflected – something to rest your eyes on



▲ Artos sigma: raising the curtain – facade cladding with close-mesh perfection



▲ ARTOS gamma: flexibility in a fine mesh structure



▲ Artos sigma 6: rigid in one direction, flexible in the other, and ideal for any facade



# Euroslot Series

## a subtle play between transparency and light

The charm and light touch of filigree meets stability – both practical and visually appealing. A definite plus for every type of public building. The Euroslot series structure creates new opportunities for ceilings with a strong contemporary feel, while concealing technical equipment such as lighting fittings, cables, piping and many more.

When glass and concrete meet stainless steel, it's love on first sight. The light appearance of Euroslot series enriches modern facades with a high-quality finish. Euroslot Series gives you nearly unlimited possibilities creating unique facades and application areas. Looking for something special? All Euroslot Series products are highly adaptable – from the gratings, to open area or the finish, everything can be tailored to your demand. Sustainable architecture is steadily becoming more and more important. With Euroslot Series you will get long-lasting and fully recyclable materials bringing joy to the next generations.

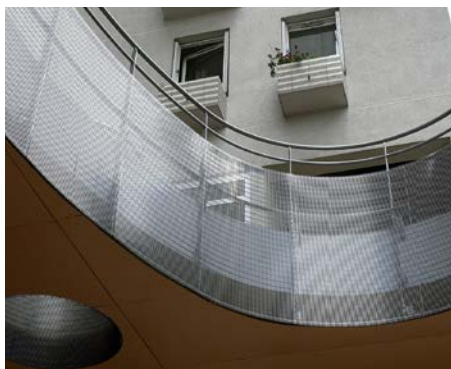


▲ Sun screens Hotel Hilton Evian, France | Euroslot Series 560

DMG Europe Office, Austria | Euroslot Series 560 ►



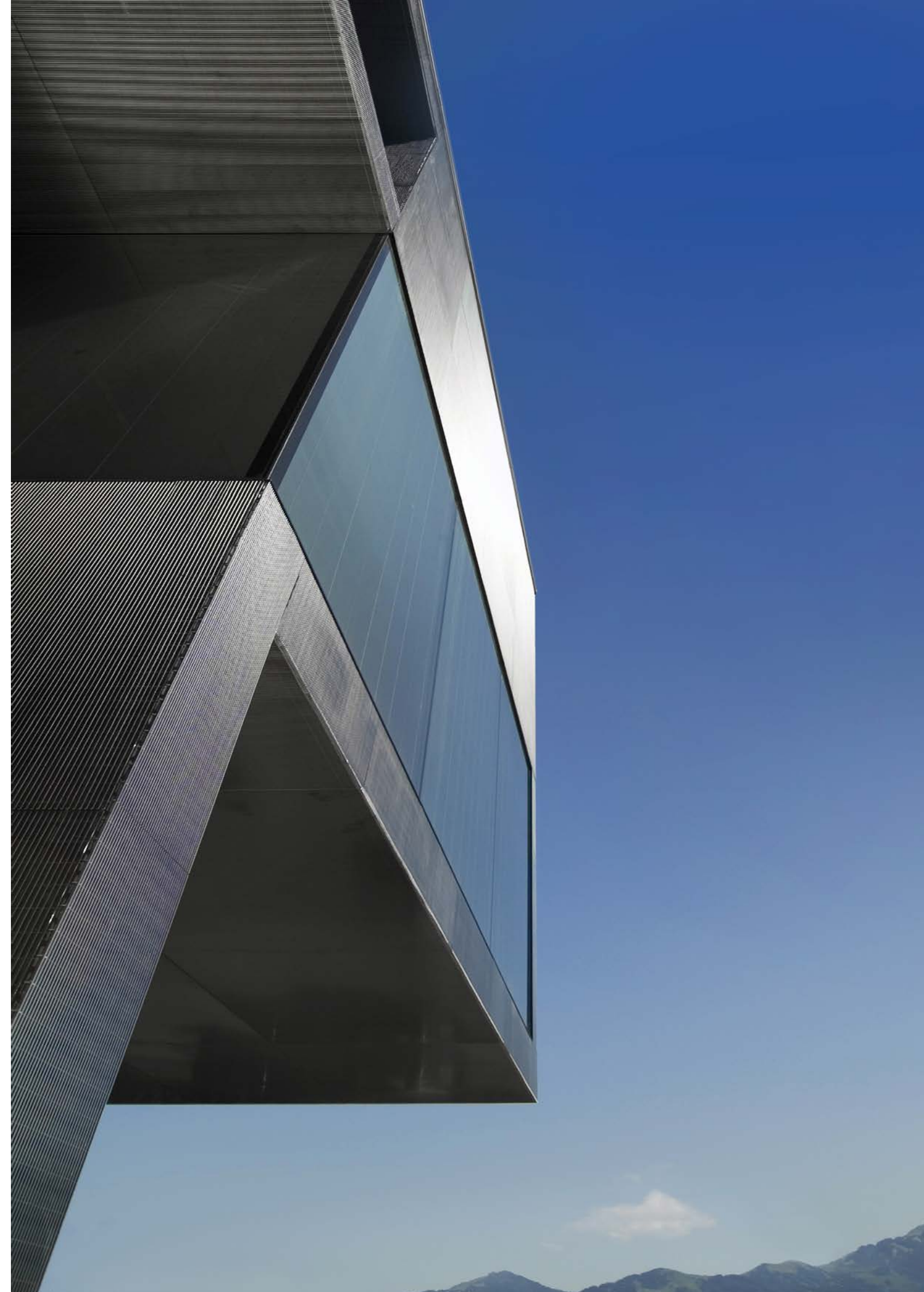
▲ Métro Val de Rennes, France | Euroslot Series 220



▲ Epinay sur Seine, France | Euroslot Series 220



▲ Mur Island, Graz, Austria | Euroslot Series 300





# Stability with a light appearance

## Euroslot Series

From vertical to horizontal – Euroslot series shows its best side in all areas of application. Specially finished stainless steel brings stability and aesthetics at the same time. Design and functionality you can rely on.

Some projects call for filigree materials that blend in with the environment. Others call for a robust look and materials which can withstand heavy load and duty. Euroslot Series 300 and 560 are the perfect solution for these projects. Manufactured from 100% stainless steel these products do not only resist heavy duty, a large open area of up to 80 percent allows additional functionality as a cover for air conditioning systems or drip grids in floorwalks.



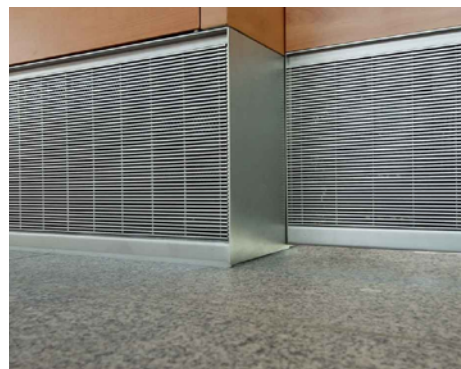
▲ School Entrance Hall, France | Euroslot Series 300

### Benefits

- Highly-resistant stainless steel
- Custom-tailored open area
- Adaptable finish and gratings for a unique look
- Different perception for the viewer depending on the distance to the object
- Functionality and design
- Weather-resistant and non-corrosive



▲ Freeway station, France | Euroslot Series 300



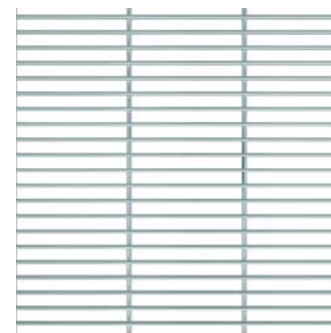
▲ Stuttgart Airport, Germany - Ventilation shaft | Euroslot Series 220



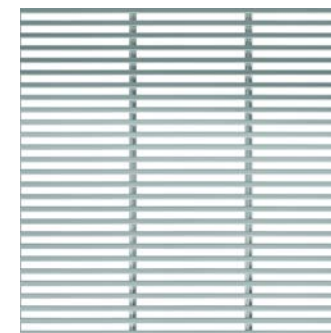
▲ College Jean Moulin, France | Euroslot Series 220



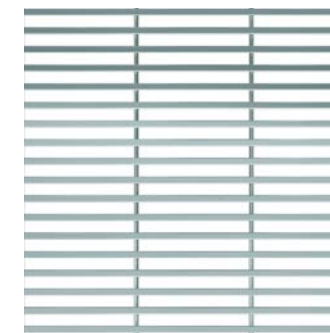
▲ Bosch Germany - Sun screens | Euroslot Series 300



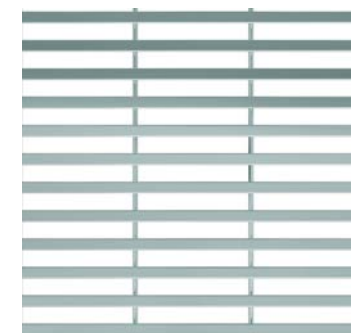
▲ Euroslot Series B150



▲ Euroslot Series 220



▲ Euroslot Series 300



▲ Euroslot Series 560



# Velaro series

## Striking surface options

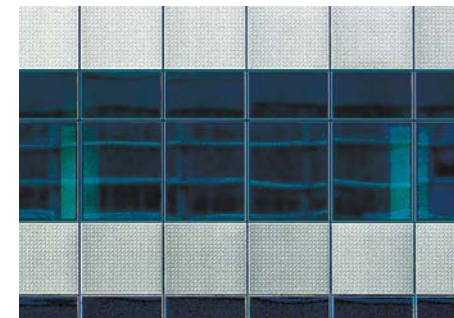
A striking appearance, functional aesthetics, and uncompromising attention to detail will surely catch the eye of the beholder. Thanks to our decades of experience and expertise in processing metals, we can help you make your mark. Our embossed or punched products go far beyond standard round or square design and help you push the boundaries of your vision.

The possibilities seem endless when it comes to lasting impressions in panels used for surface cladding. Especially when handled by specialists with a long tradition and unique knowledge of producing facade elements. Facade design, quality, and surface finish can be redefined thanks to a new awareness of these materials. Architects will benefit from

our knowledge of processing metals: knowledge which we are happy to demonstrate and share. Our depth of expertise enables you to source elements from one supplier, with the assurance that skilled professionals are handling every stage of the planning and production process.



▼ Velaro series 100 facade, Regensburg, Germany ►



▲ In harmony: a rigid structure unites the surfaces



▲ All-weather material: stainless steel always looks best



▲ Non-slip properties: eye-catching and safe to walk on



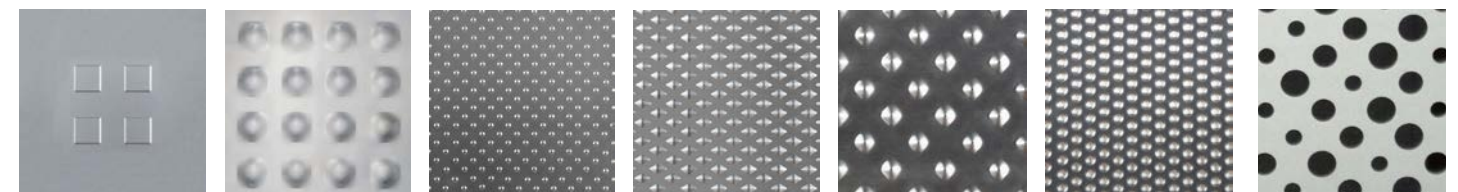
▲ Parking Garage, Regensburg, Germany

### Entirely superficial

The flexibility of the product, combined with our experience in plant construction, provide the fundamental building blocks for us when producing impressive made-to-order surfaces. Fueled by a passion for innovation, we develop our own processing tools to achieve the facade properties you desire.

### Benefits

- Top-quality building facades
- Certified anti-slip properties
- Harmonious visual appearance
- Extremely weather-resistant
- Lasting visual value
- Vivid impression
- Plays with the sunlight



▲ A diverse spectrum of possibilities: Velaro series 100 - 700



# SonoPerf sound insulation panels

## Wave-breaking innovation

Undisturbed communication – whether in public places, corporations, educational institutions, or private homes – is desirable and often times necessary. SonoPerf panels create the right sound conditions in virtually any building in an aesthetic and “invisible” way. The secret is in the innovative micro-perforations.

SonoPerf redefines the sound barrier. A micro-slotted panel (slot widths from 0.3 - 1 mm) offers beauty and sound absorption in one element. The panels can be powder-coated or stainless steel, depending on the surface look you are aiming for. The impressive SonoPerf acoustic element can be backed with an acoustic fabric (thin fleece or mineral wool).

At close viewing, the micro-slotted panels give the impression of a solid surface and offer excellent absorption values (0.95  $\alpha_S$ ). Even with virtually invisible slots, the free area is sufficient for the highest absorption class. This unique panel can be used in many different applications: acoustic ceilings, floating ceiling panels, movable walls and partitions, furniture front panels, screens for workstations, and sound-absorbing baffles for noise reduction in aircraft.

### Benefits SonoPerf Office

- Sound absorption even without acoustic fleece
- Visual effect like a solid material
- Excellent absorption values up to class A
- Ease of shaping and installation comparable to that of solid sheet metal
- Many applications
- Can be faded invisibly into the environment
- Available as ready-to-install sound absorbing ceiling



▲ SonoPerf Office in acoustic ceiling elements

## SonoPerf Series

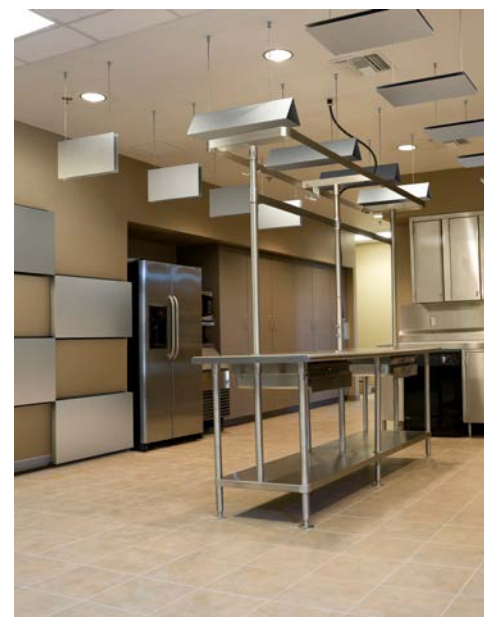
### Sound insulation for hygienic areas

#### Where other sound insulators can't be used

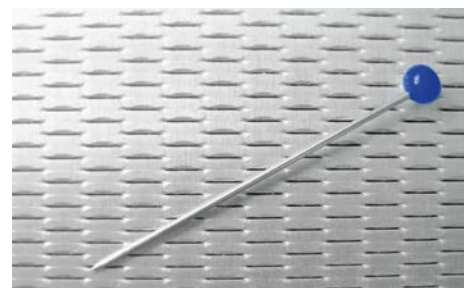
SonoPerf Series was invented to limit sources of noise in industrial areas or areas with very high hygienic standards like pharmaceutical manufacturers, commercial kitchens, food manufacturers and many others. Due to the risk of mold and dust, which can contaminate the products, standard sound insulators with acoustic fleece must not be used. SonoPerf Series absorbs sound with its acoustic metal panels only, can be cleaned in industrial washers, is acid-proof and fire-retardant.

#### Benefits SonoPerf Series

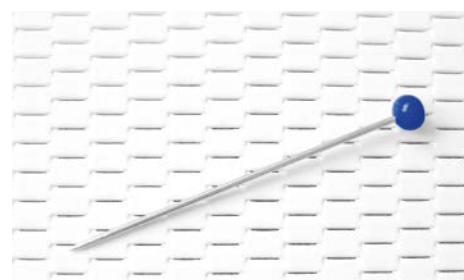
- Sound absorption without a fleece
- 100% suitable for hygienic areas
- Easy cleaning & acid-proof
- Fire-retardant
- Many different solutions available



▲ Commercial kitchen with SonoPerf panels installed



▲ SonoPerf: Aluminum



▲ SonoPerf: Aluminum, powder-coated in white



▼ Printed SonoPerf panel for noise reduction



# A business partner you can trust

## ANDRITZ lends a helping hand



Our customers are our most precious asset. We work closely with each customer to ensure that our products help them achieve their goals for functionality, beauty, and economy. We stand ready to help with planning a project, offering technical advice, providing innovative approaches, and assisting with installation.

The ANDRITZ Group's global presence and network of companies ensures our customers access to high-quality products and worldwide support. ANDRITZ consistently delivers top-class products and services.

**ANDRITZ Kufferath GmbH**

Lommessemstr. 32–36  
52353 Düren, Germany  
Phone: +49 (2421) 8010  
kufferath@andritz.com

**ANDRITZ Fiedler GmbH**

Weidener Str. 9  
93057 Regensburg, Germany  
Phone: +49 (941) 64010  
andritz-fiedler@andritz.com

**ANDRITZ Euroslot SAS**

ZA Les Priédons CS 60050  
86140 Scorbé-Clairvaux, France  
Phone: +33 (549) 93 93 93  
info-euroslot@andritz.com

[www.andritz.com](http://www.andritz.com)